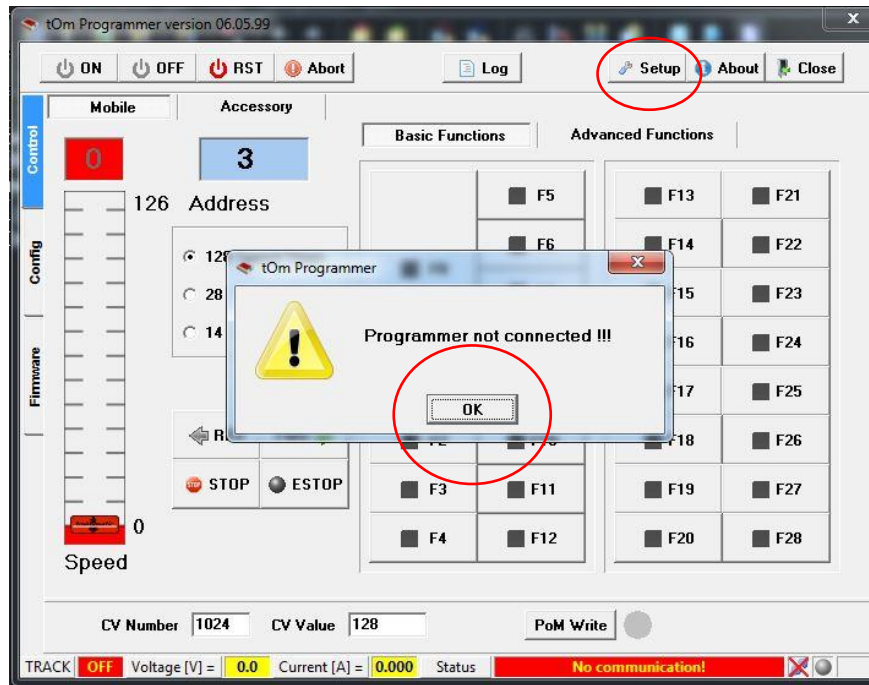
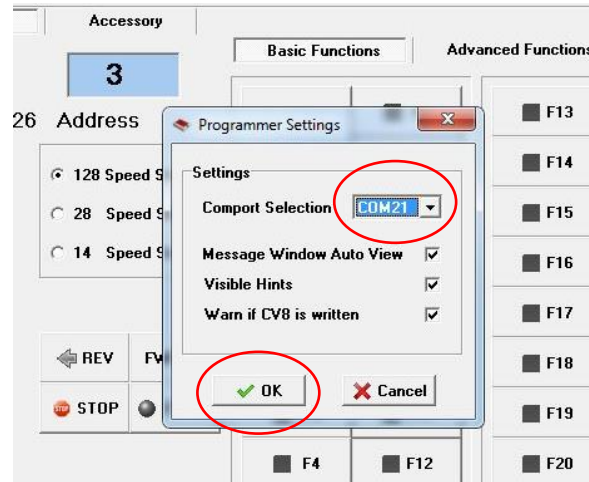


For the updating of the tOm Programmer Beta (version 6.05.99 and up) please follow these steps:

1. Unpack the executable in a newly created folder (for example c:\tOm Programmer\)
2. Run the tOmProgrammer.exe
3. The software will report “Programmer not connected !!!”

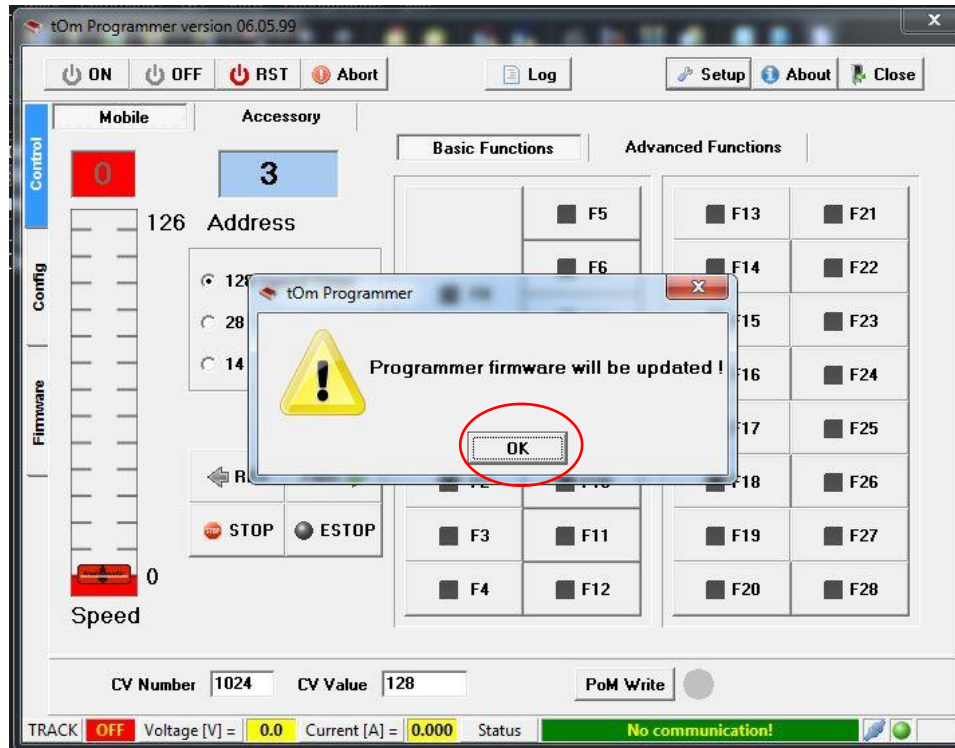


4. Press the OK button, and click on the Setup button on the toolbar

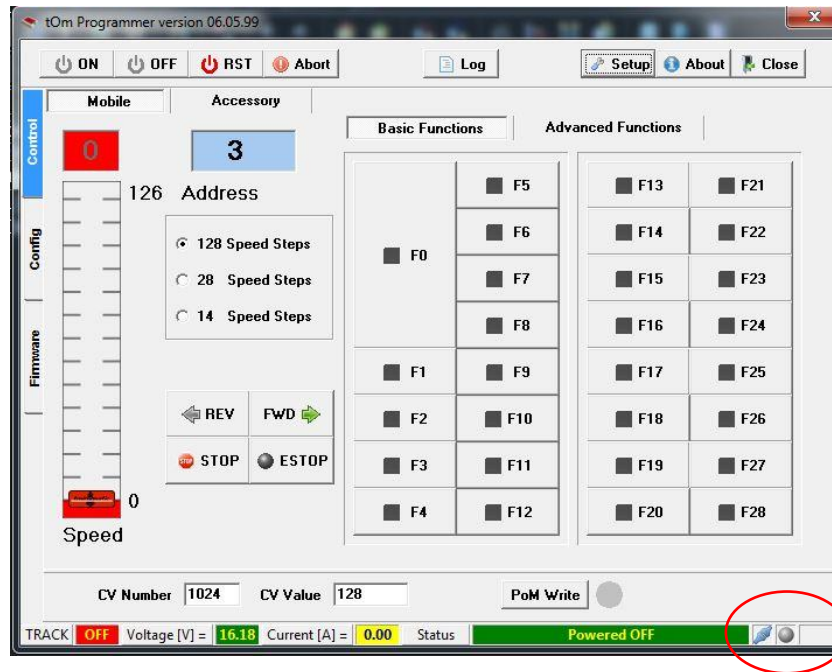


5. In the Comport Selection drop down box, select the port where your programmer is connected (this can be found out in the Device Manager). If your programmer has been used previously on the same computer, chose the same COM port where it has been used. Press the OK button, the Programmer Settings window will close.

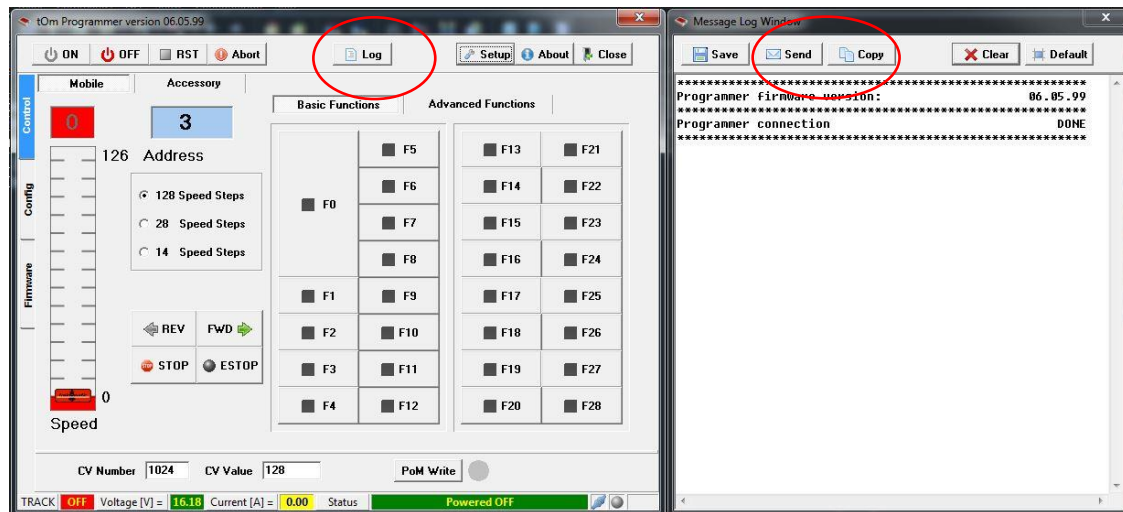
- The programmer will be recognized, and the software will report that an update must be performed. Accept by pressing the OK button



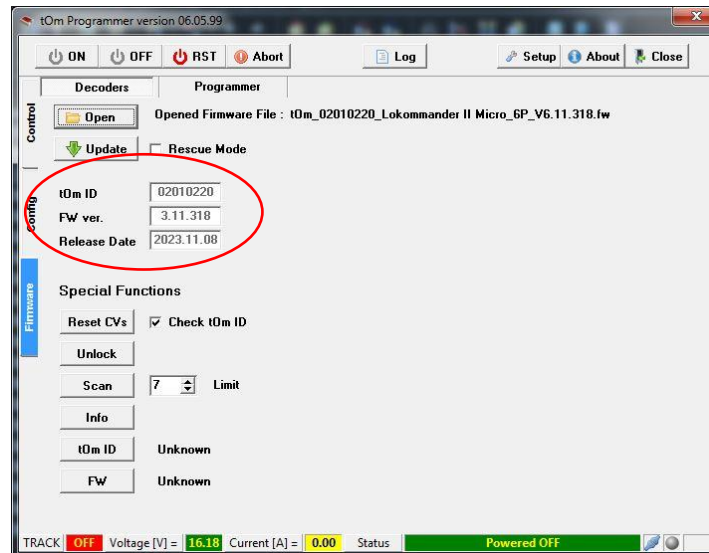
7. The programmer will be updated (the progress is visible in the status bar), and once it is finished, your programmer is ready for operation. The connection icon in the status bar will show the connection status.



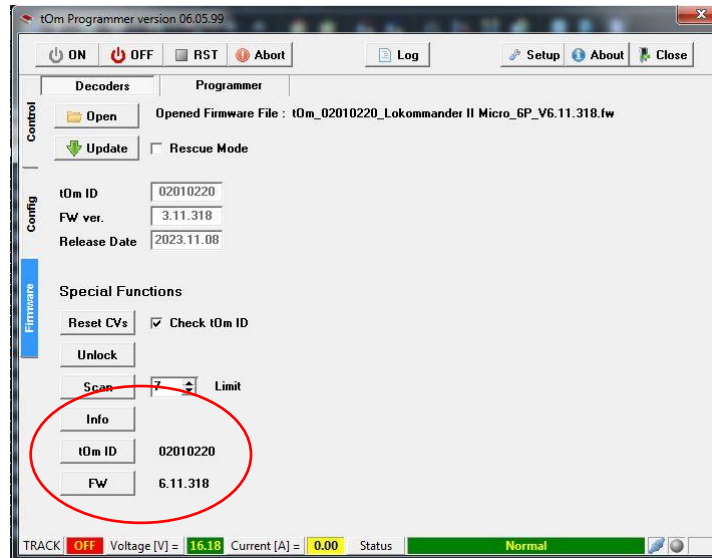
8. Important changes in the Beta release
 - A. Using the Log button, all major operations are logged in a separate window. The window can be opened or closed using the Log button. In case of a support request, the content of the log window can be copied, and pasted to an email. The Send button will open your default email client, with the email address of our support already filled in. You just have to describe your problem, paste the content of the log window and send the email



- B. The firmware update files have a new format, with *.fw extension. But of course, the software can handle the old firmware version files too. Preferably use the new file format. Once the firmware file is opened in the Firmware TAB (Decoder sub TAB), the tOm ID and firmware version is displayed.



- C. With a single button press, you can read the connected decoder tOm ID, Firmware version, or the complete decoder info (this is valid only for tOm decoders)



- D. A new Rescue Mode is available, for updating the decoders, whose previous firmware update failed. However, use this Rescue Mode with precautions. In normal firmware update mode, the tOm ID (the decoder type) is checked, and the programmer will not allow decoders update with a different mode firmware. In the Rescue Mode, the decoders ID is not checked, so it is possible to update a decoder with the firmware of another decoder model. So please use the firmware files only for the decoder in case, updating it with another decoder's firmware can cause permanent damage. This is only a Rescue Mode, as it is name, and consult our technical support before proceeding with this update

